

Deltek Open Plan™

Powerful Enterprise Planning and Scheduling

DELTEK OPEN PLAN HELPS YOU:

- Analyze performance across a program of projects
- Define project priorities
- Allocate resources efficiently across the organization
- Plan projects quickly and realistically
- Model resource pools and skills
- Closely monitor and control projects from initiation to completion
- Rapidly analyze project status
- Minimize risk within an organization

Project delivery is critical to business success. As projects increase in complexity, number, and value, constraints become tighter. The challenge is to successfully manage resources, time, and budget across the enterprise. Today, this challenge falls upon a range of participants including business managers, project managers, and resource managers. These managers require information access and the ability to model that information to maximize performance while minimizing risk.

Deltek Open Plan is an enterprise-class project management solution that offers the power and flexibility to complete medium-to-large and/or multiple projects on time and on budget. With multi-project analysis, critical path planning and resource management, Open Plan caters to the differing needs of business, resource and project managers.

THE DELTEK OPEN PLAN ADVANTAGE Support Enterprise-Level Program

Management — Balancing limited resources across multiple projects is a challenge for any organization. To achieve this balance, business managers need to review work across the corporate portfolio. They also need to see the instant impact of an individual project's performance on the rest of the program and manage project priorities. Open Plan offers business managers a comprehensive set of tools to enhance decision making and optimize program management.

Improve Project Planning — In today's fast-paced business environments, project managers need to be able to assimilate information as quickly as possible. Open Plan facilitates fast and realistic planning through rapid data entry, analysis and powerful reporting on project status and progress.

"Open Plan and Cobra provide us with a consistent approach across all phases of the project, including design, development, manufacture, and support.... as with any project, problems still occur, but with Open Plan and Cobra, they are identified early on, enabling us to assess the impact and plan for corrective action."

- David Chard, Project Planning Release Manager with BAE Systems

Manage Resources — Open Plan prioritizes projects, ensuring that resource allocation reflects an organization’s overall business objectives. For maximum efficiency, resource managers can create and share Resource Breakdown Structures across the enterprise. Resources can be allocated manually, according to skill and availability. Alternatively, Open Plan can automatically present solutions that take into account target dates and resource usage across multiple projects.

Leverage Existing Systems and Processes — Open Plan’s architecture facilitates integration with other corporate systems making it easier to share information across the enterprise. Data can also be shared with desktop planning tools such as Microsoft® Project, providing an enterprise wide roll-up and reporting view. Customizable WebWindows allow Open Plan’s reporting capabilities to be extended to integrate data from other systems such as Deltek Costpoint®, Oracle® Projects, or SAP®.

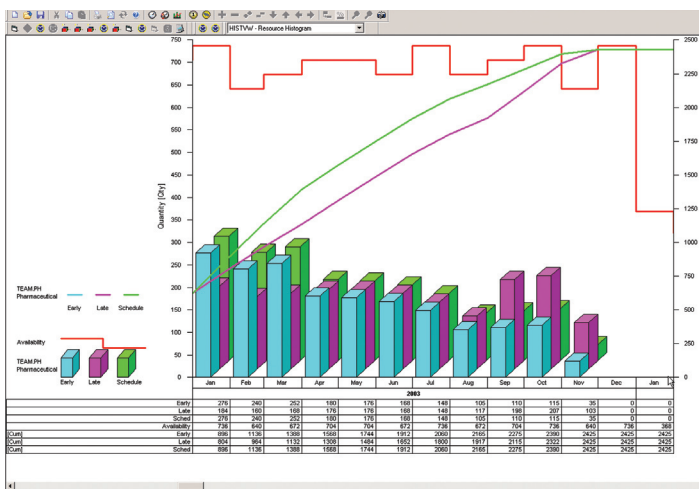


Figure 1: Hours/Cost Reporting

KEY FEATURES AND BENEFITS

Project Planning — Facilitate fast and realistic planning through rapid data entry, analysis and reporting on project status and progress.

Performance Reporting and Analysis — Configure graphical views to fit business requirements for both reporting and data entry.

Cost Management — Provide maximum flexibility to set up control systems tailored for specific environments.

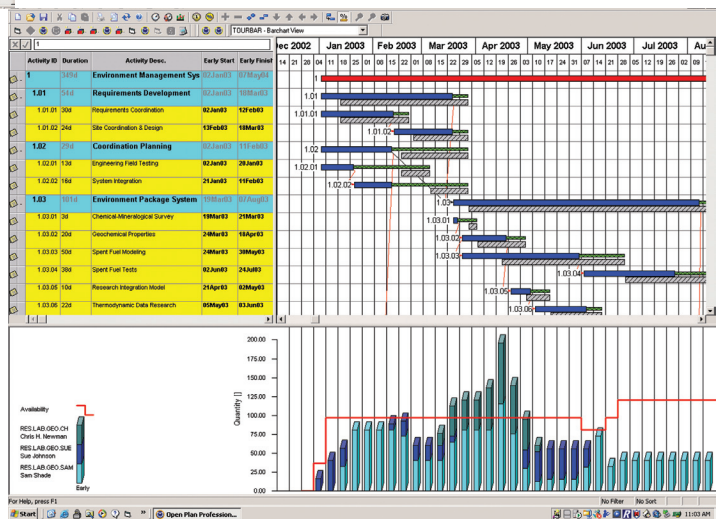
Critical Path Planning — Model the activities and events of proposed projects. Deltek Open Plan shows which activities are critical to maintain the schedule and which are not.

Multi-Project Analysis — Optimize resources across the enterprise through cross project reporting. The relative priority of projects can be adjusted to ensure that the most important projects have access to resources first.

Dynamic Resource Views — Review resource assignments for one or more projects. Provide a graphical, high-level view of constraining resources that need attention.

Dynamic Loop Detection — Alert users that a created relationship could cause a loop. This reduces logic errors when building a plan.

Figure 2: Barchart View



Unlimited Calendars — Support ten shifts per day with separate calendars for activities, relationships and resources.

Multiple Scheduling Increments — Schedule in months, weeks, days, hours and minutes within the same project. With Open Plan, businesses can improve project success, allocate resources across projects more effectively and share project information across the enterprise.

Resource Management — Target key project resources for specific activities.

WHY DELTEK OPEN PLAN?

OPEN PLAN VS PRIMAVERA®:

- Flexible program & project coding
- True control over enterprise data
- Multiple views & dialogs can be opened simultaneously
- Highly interactive graphical views for all data
- Deltek develops all of it's own EPM software

OPEN PLAN VS MICROSOFT® PROJECT 2002:

- Truly shares resource across the program or enterprise
- Supports hierarchical resources to model the enterprise
- Comprehensive security model
- Shared auxiliary information including codes, calendars & view templates
- Handles large projects in a true multi-user environment

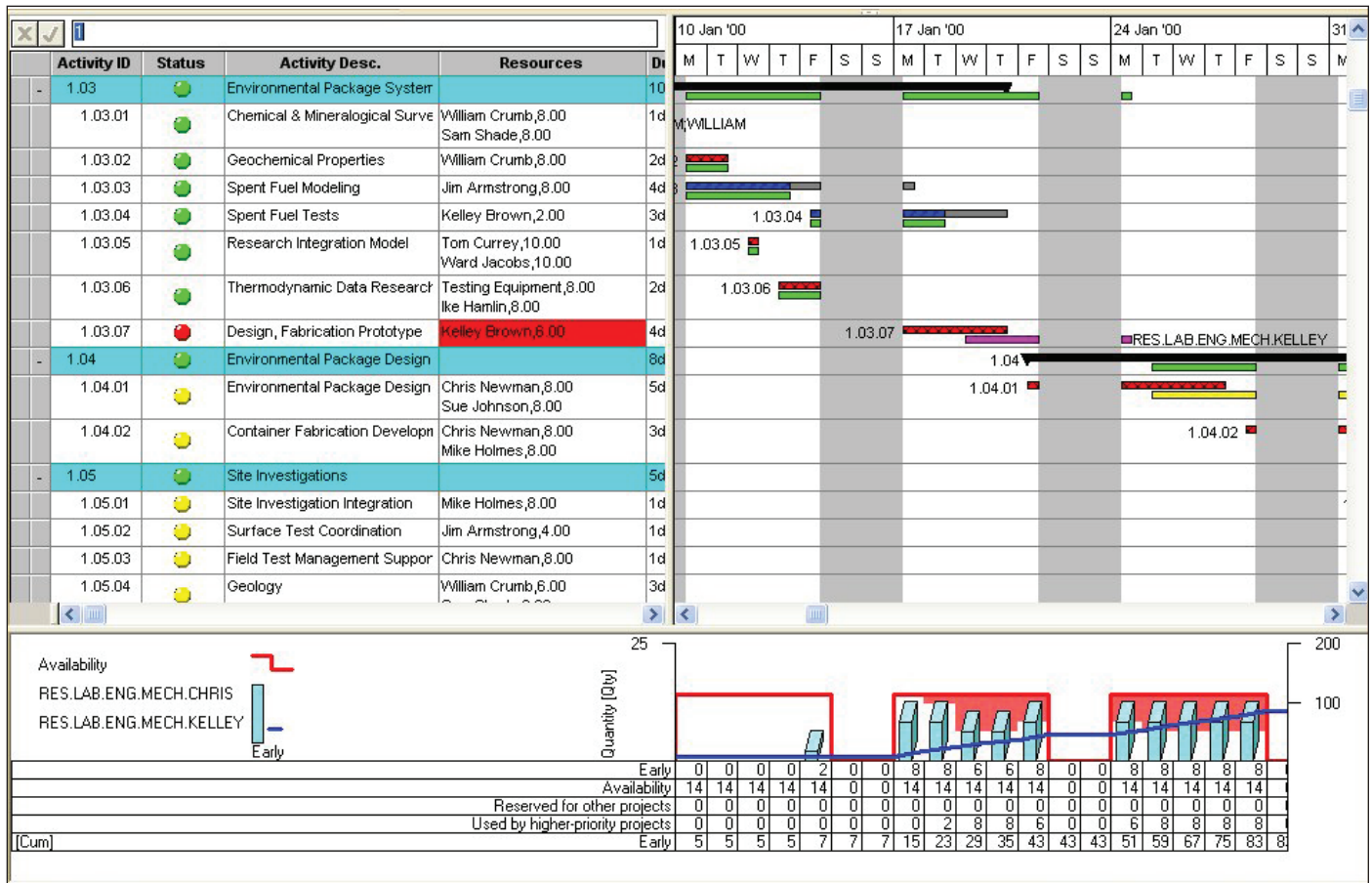


Figure 3: Resource Scheduling

Business managers, project managers and resource managers at project-focused businesses will greatly benefit from Open Plan's powerful enterprise planning and scheduling functionality.

Contact
Deltek

www.deltek.com
info@deltek.com
800.456.2009

Deltek is a global leader dedicated to delivering enterprise management software that meets the unique needs of project-focused organizations. With over two decades of experience, Deltek enables companies to maximize profitability and productivity, integrating all aspects of their businesses. More than 11,000 customers worldwide rely on Deltek to streamline operations, improve performance and win more business.

LEVERAGE YOUR EXISTING SYSTEMS AND PROCESSES

Open Plan's open architecture facilitates integration with other corporate systems making it easier to share information across the enterprise. Data can also be shared with desktop planning tools such as Microsoft® Project, providing an enterprise wide roll-up and reporting view. Customizable WebWindows allow Open Plan's reporting capabilities to be extended to integrate data from other systems such as Deltek Cobra™, Deltek Costpoint®, Oracle® Projects, or SAP®.

DATABASE SUPPORT

Microsoft Access® 2000+
Microsoft 2000, 2005
Oracle® 9i/10g

PLATFORM SUPPORT

Windows® 2000 (128 MB RAM recommended)
Windows® XP (256 MB RAM recommended)
Windows® Terminal Services / Citrix®

CAPACITIES

Unlimited Number of Projects
Unlimited Projects Per Program
Unlimited Activities Per Project
Unlimited Calendars Per Program/Project
Unlimited Resources Per Program/Project
Maximum of 90 Code Structures Per Program/Project